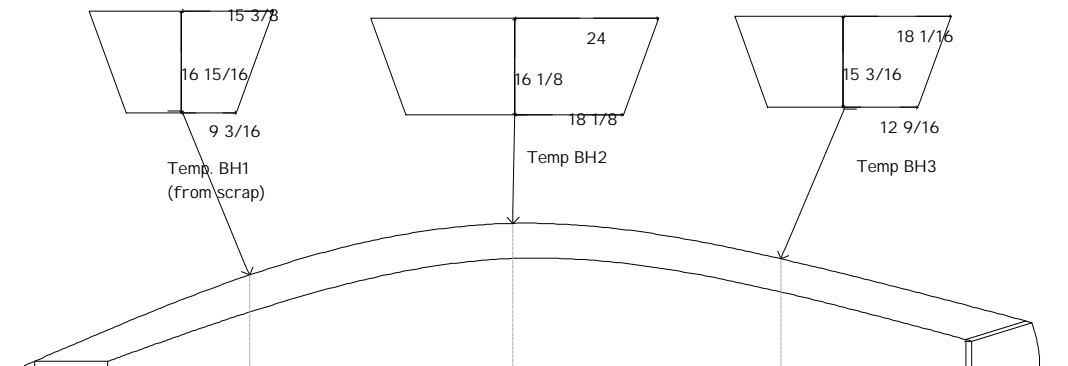
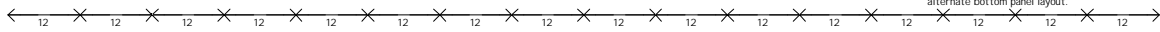
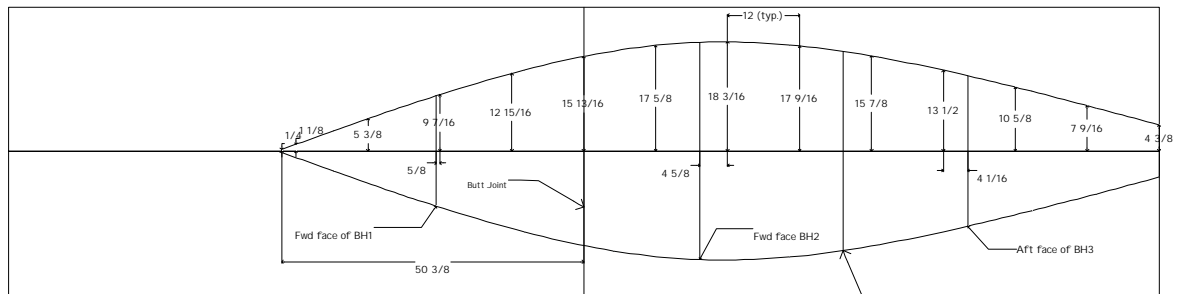
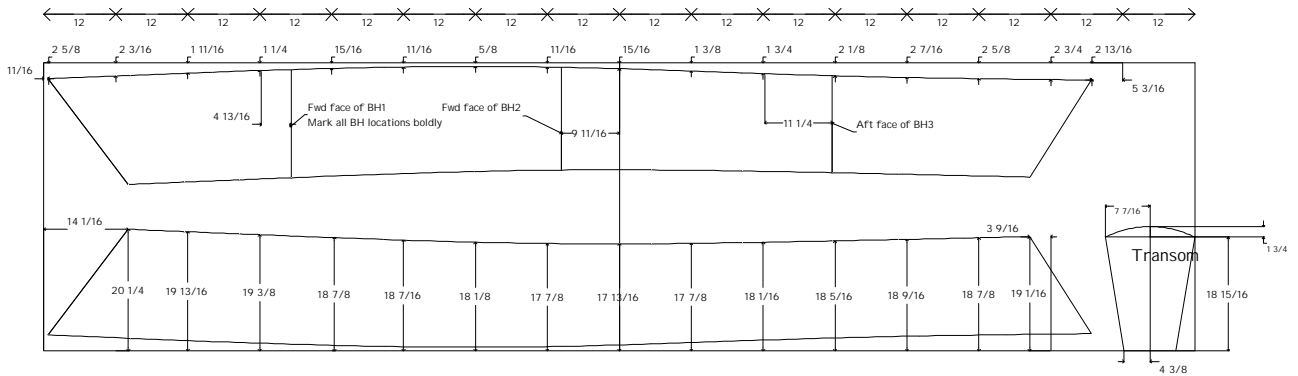
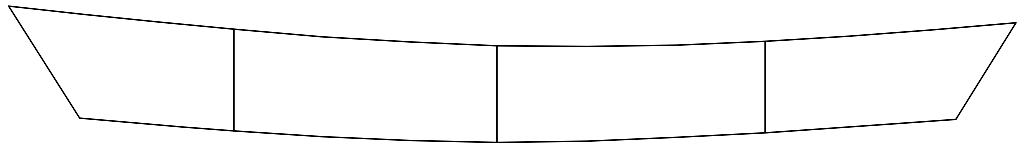
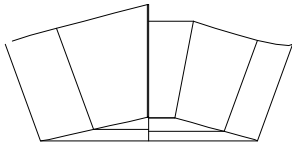
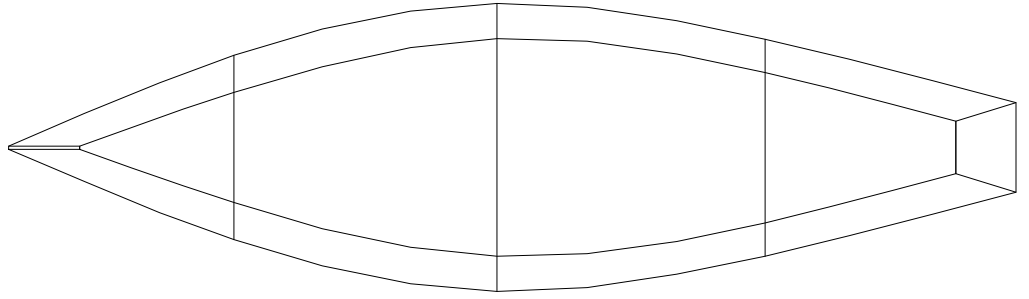
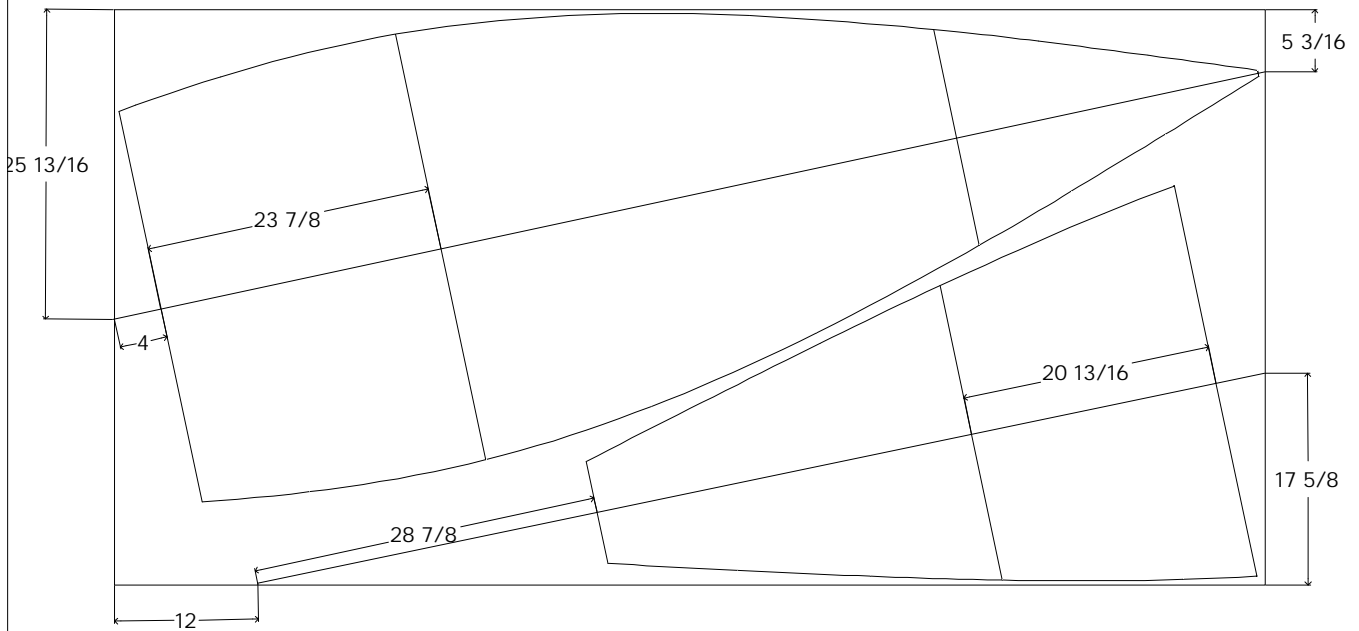


Blackberry 14
 14' 1" x 48"
 John Bell, Kennesaw, GA
 (c) 2002

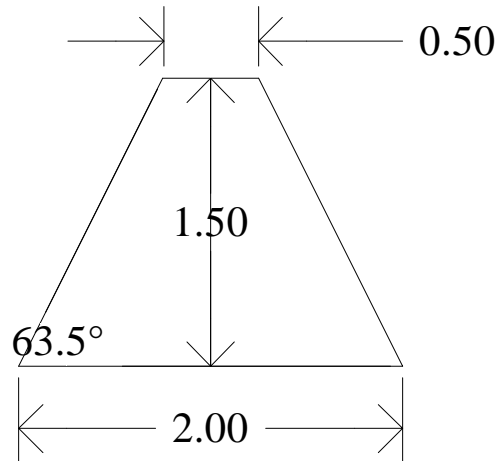




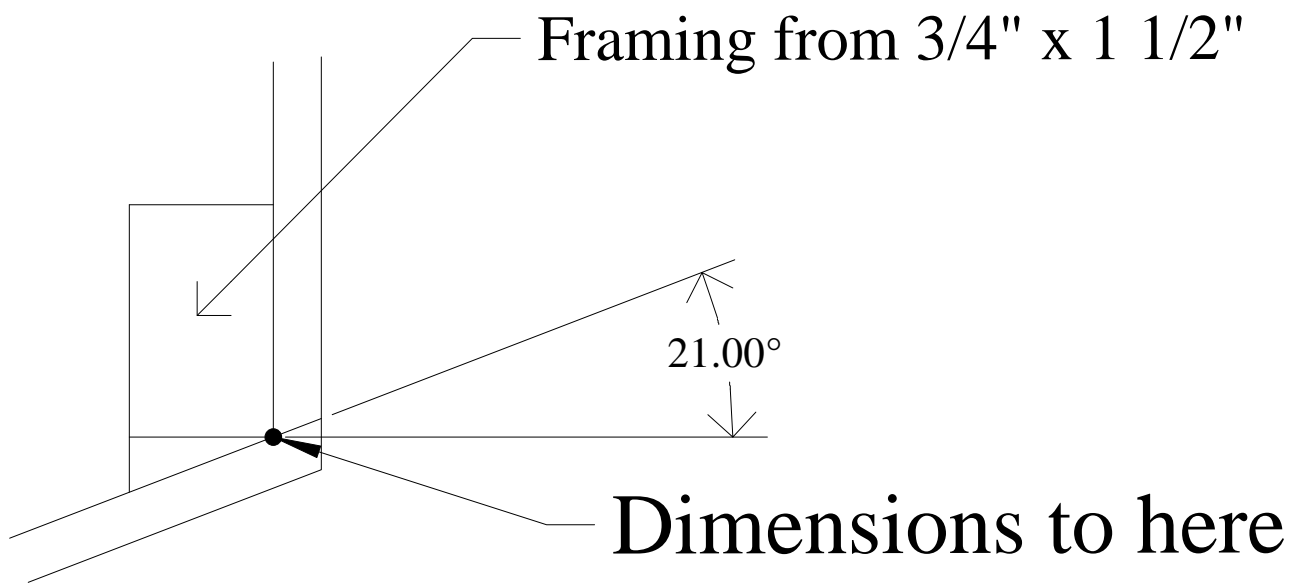
Blackberry 14 Alternate Bottom Panel Layout

Note: Use only for taped seam or inside chines.
 Will not work for outside chine construction.

© 2002 - John Bell, Kennesaw, GA



Stem (full size)



**Transom side
bevels (full size)**

Framing from 3/4 x 1 1/2

Dimensions to here

36.00°

Transom bottom
bevel (full size)

